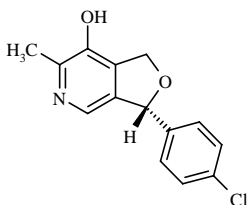


WEEKLY NEW PRODUCT BULLETIN

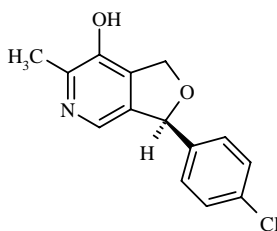
In an effort to increase our customer service and highlight our new products, we are pleased to offer you our newest weekly **New Product Bulletin**. We will send one out each week with a listing of products whose synthesis pathway has been recently assessed. Quotes for these products are immediately available.

If you have any questions or would like a quote for any of these products, please send an email to sales@synfine.com. To see a complete listing of our products and services, please visit our website at www.synfine.com.



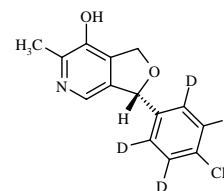
Molecular Weight =261.71
Molecular Formula =C₁₄H₁₂ClNO₂

(R)-(-)-Cicletanine



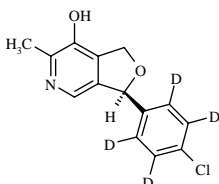
Molecular Weight =261.71
Molecular Formula =C₁₄H₁₂ClNO₂

(S)-(+)-Cicletanine



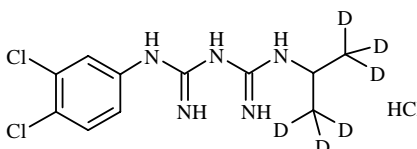
Molecular Weight =265.73
Molecular Formula =C₁₄H₈ClNO₂D₄

(R)-(-)-Cicletanine-d₄



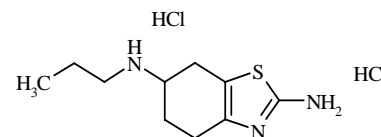
Molecular Weight =265.73
Molecular Formula =C₁₄H₈ClNO₂D₄

(S)-(+)-Cicletanine-d₄



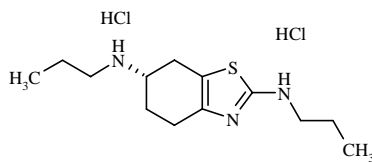
Molecular Weight =294.22 36.46
Molecular Formula =C₁₁H₉Cl₂N₅D₆ . HCl

Chlorproguanil-d₆



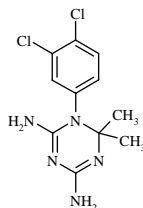
Molecular Weight =211.33 2 36.46
Molecular Formula =C₁₀H₁₇N₃S . 2 HCl

**Racemic Pramipexole
Dihydrochloride**



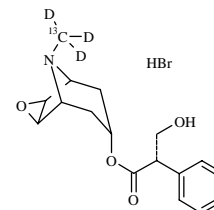
Molecular Weight =253.41 2 36.46
Molecular Formula =C₁₃H₂₃N₃S . 2 HCl

**2-Propyl Pramipexole
Dihydrochloride**



Molecular Weight =286.17
Molecular Formula =C₁₁H₁₃Cl₂N₅

Chlorocycloguanil



Molecular Weight =307.37 80.91
Molecular Formula =C₁₇H₁₈NO₄D₃ . HBr

**Scopolamine-¹³C₁-d₃
Hydrobromide**